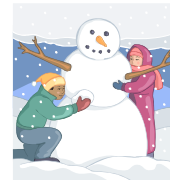


# President Jack's Update



Enjoy wherever you are this winter!

## Happy New Year!!

We received in the mail a calendar entitled "Achievement 2010". You've all seen this type of calendar with wonderful pictures and inspirational sayings –by famous people-. I may use some of the sayings, where appropriate and with credit, in my Updates and, maybe, Camping Today articles.

Since it's the start of a new year this slogan seemed appropriate.

**IF EVERYONE IS MOVING FORWARD TOGETHER THEN SUCCESS  
TAKES CARE OF ITSELF**

Henry Ford

**Haiti Earthquake Relief:** FCRV members are known for their generosity. Katrina relief was one example. While most of us and our members may be making personal contributions, through recognized international charities to aid in the Haiti relief, please encourage your local chapters to also support this effort through their chosen relief agency.

**Executive Board Updates** – Several of our board members continue to wrestle with and to continue to heal with health issues. Barb Turner's Update keeps most of us apprised of such members.

We were saddened to learn of the death of Kathy Leckrone, Arizona State Director just before Christmas. Our condolences go out to Jerry and family.

Last month I reported that Marilyn Williamson, former Canadian Regional Director, was gravely ill with a seizure. I'm pleased to report that Marilyn is recovering from the seizure and does not appear to have any physical or mental impairment. Roy and all the Williamson family thank our FCRV members for their prayers, cards, and well wishing thoughts.

I spoke with Vickie Roop yesterday. Vickie and Larry are in the Texas Valley and she continues to mend. Daily walks are improving her lung capacity.

Elva Forte, reports that Anthony is on the mend, and if nothing else happens, the doctors have cleared them to be able to come to the WBM and Retiree Rally.

Loana Schraeder advises that Roy is once again fighting prostate cancer (last bout was 2002). Roy will be entering a special drug study program for the next 13 months starting now. Please keep Roy and Loana in your prayers.

Al Worthington, PA State Director, is having hip replacement surgery on February 12<sup>th</sup>. Please keep Al & Cindy in your prayers. Unfortunately, because of rehab, they will not be able to attend the WBM nor the Retiree Rally.

## Change of addresses:

Lloyd & Kay Humphrey are in Florida for the winter. Their contact information in Florida is Lloyd & Kay Humphrey

3018 Lake Drive  
Avon Park, Fl 33825  
845 616 9377 (cell)  
863 414 0716 (cell)

Note they have no land line service

They have a number of e-mail addresses that will work

LHumpre@localnet.com, LHumphre@gmail.com, LHumphrey31@earthlink.net,  
FCRV4FUN@yahoo.com

Glen & Claudia Else, National Campvention Director also have a winter address  
San Juan Gardens  
900 E Bus. Hwy #83 Lot C-57  
San Juan, TX 78589

### **Retiree Rally, Ladson SC**

Please continue to push this activity in your States and Provinces. Paul Parsley and his team are working hard putting together what will be an enjoyable rally. As of early January the registration was **178 units**.

### **Chairperson Needed for 2011 Retiree Rally, Canton TX**

Al & Barb Jurek, National Retiree Director, report that they still have not had any volunteers come forward to take over as chairperson. Please get in touch with Al & Barb. They can advise the current status of 2011 Retiree Rally and what are the specific responsibilities of the chairperson.

### **Web Site News:**

The February issue of Camping Today will be released shortly. Vickie will send a notice.

Vickie also reports that she is in contact with an FCRV volunteer to understudy her role as Web Site Editor. We'll have more to announce in the future.

### **Dealer Chapter News:**

#### **New Dealer Chapter for Missouri**

Congratulations to Dave Ludwig , Alan & Glorine Bahl, Missouri Field Director, Luella Sprague , Missouri State Director, and Bill Eckman for all their hard work and dedication for signing up our newest dealer chapter, **Premier Coach Services of Riverside Missouri**. We now have dealers chapters located in Colorado, Missouri, Ontario, Pennsylvania, and Wisconsin.

#### **Discount Rate for Dealer Chapters**

The Trustees have decided that the FCRV membership rate for dealer chapters will be discounted \$5 from full membership rates. Currently that means that current and future dealers will pay \$25 US per membership until rates are changed. FCRV recognizes the potential volume of members that the dealer chapters can provide. The discount is a slight incentive for both retaining existing dealer chapters and signing up new dealers chapters. Bill Eckman, National Membership Director, continues to be our contact person for establishing dealer chapters. Bill will work with State/Provincial directors on establishing dealer chapters and has the latest dealer contract information and brochures.

## **Winter Board Meeting 2010.**

Detailed information has been provide in my **Oct. 15, 2009** Update and also **Dec. 18, 2009** Update  
Final details will be provided in my February Update.

### **Menu Options for WBM 2010 Closing Banquet**

Marti Price is co-ordinating our closing banquet which will be held at the Landmark Hotel. She still needs to hear from many of you. We do have a minimum number of attendees we must pay for. If we cannot attain that number by March 5, Marti will be obliged to cancel the banquet.

Remember that we only have until February 17<sup>th</sup> to reserve our rooms at the Landmark Hotel. As of one week ago, only 7 rooms had been reserved.

**Free Shuttle Service** is available from the Myrtle Beach Airport to the Landmark Hotel. Just call for pick up when you arrive at the airport. Return trips to the airport will be arranged at the hotel.

### **FCRV TODAY Quantities:**

Sue at HQ advises that she is still getting requests for FCRV TODAY and only has about 1000 copies left. We do plan to have an updated stock available again by Campvention. Please check your supplies in your states/provinces and what you think you may use prior to Campvention. If necessary, we can always order a few thousand more in short order, but we don't want to incur the expense if it's not warranted. You may report your requirements (or surpluses to) Sue directly.

**National Scholarship Applications:** The Petersen's report that thus far only eight applications have been received. Applying for a FCRV National Scholarship should be a given for any member, adults too, that meet the academic qualifications. Please push the scholarship application process in your states/provinces. For fast response the Petersen's encourage you to send applications via e-mail to [petersen76@aol.com](mailto:petersen76@aol.com)

### **New HQ Office Hours:**

On the recommendation of our office manager, Sue Fromholzer, and with agreement from Jacqui and Jamie, the hours for staffing the office are being reduced.. The trustees have agreed to this reduction.

Effective immediately, the office hours, EST, will be

Monday 8-4 (no change)

Tuesday 8-4 (no Change)

Wednesday, Thursday, & Friday 9-3 ( a reduction of two hours per day)

### **Membership continues to slip.**

As of January 4<sup>th</sup>, 2010 our membership was 5556.

Until next time,  
Jack